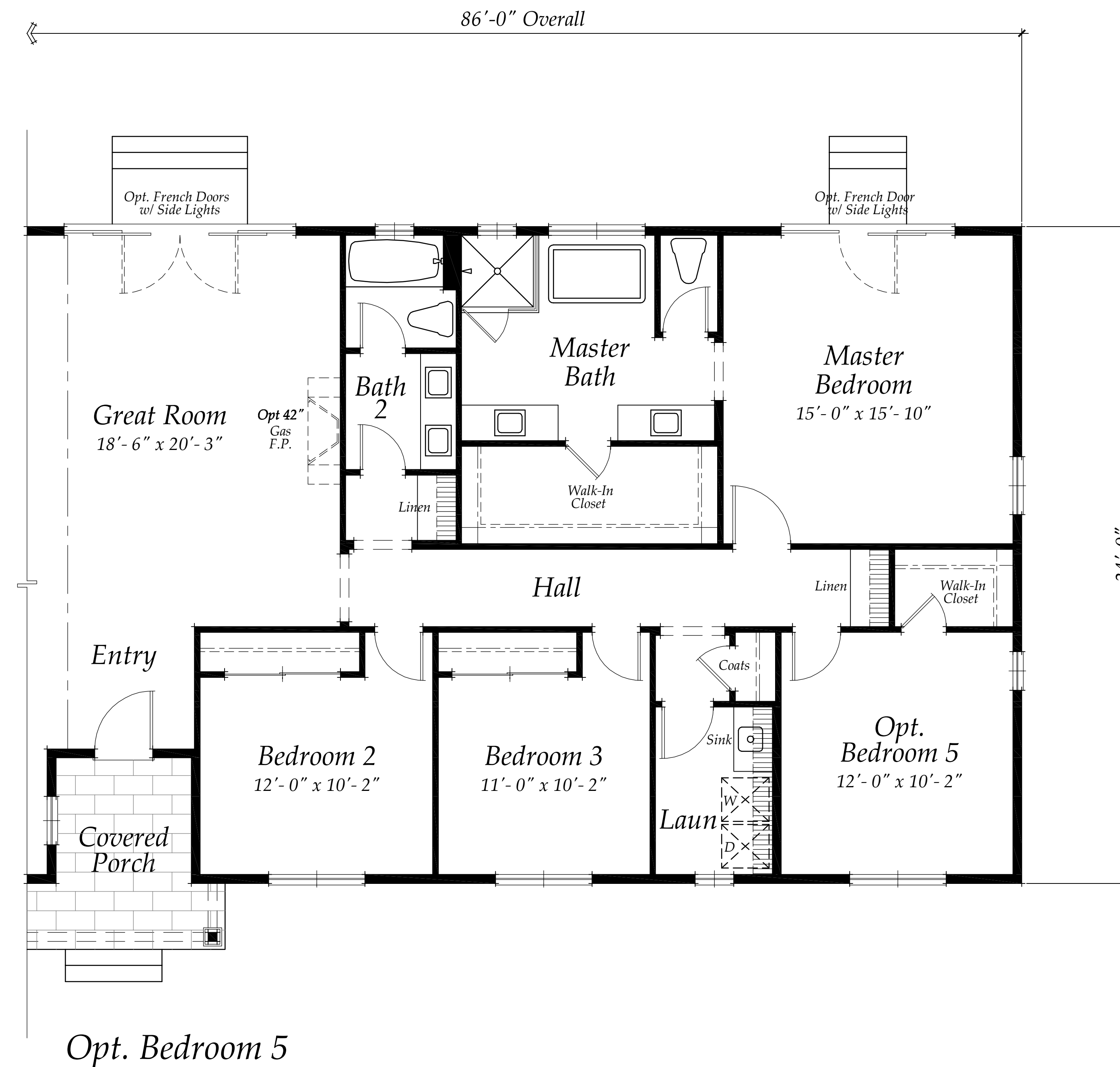


Opt. Bedroom 4



Opt. Bedroom 5

### Square Footage

Main House:	1,943 sq. ft.
3 Car Garage:	686 sq. ft.
Covered Porch (Varies per Elev):	111 sq. ft.
<b>Total Livable:</b>	<b>1,943 sq.ft.</b>
Opt. Powder Room:	+38 sq.ft.
Opt. Bedroom 4/ Bath 3:	+310 sq.ft.
Opt. Bedroom 5:	+204 sq.ft.
Opt. Covered Patio:	+340 sq.ft.

## Plan 2

### 1,943 Sq. Ft.

### Options

Scale: 1/4" = 1'-0"

*Disclaimer:*  
The dimensions of the As-Built Residence may vary slightly from this Plan due to field conditions. Window locations may vary by elevation style. Floor Plan reflects the Craftsman Elevation

**Stonefield Companies**  
23333 Avenida La Caza  
Coto de Caza, CA 92679

# Larkfield Estates

**PEKAREK** architects, inc.

architecture • planning  
31411 camino capistrano  
suite 300  
san juan capistrano  
ca. 92675  
(949) 487-2320

PEKAREK ARCHITECTS, INC. hereby expressly reserves its common law copyright and other property rights in these plans. These plans are not to be reproduced, copied or changed in any form or manner whatsoever, nor are they to be assigned to any third party, without first obtaining the express written permission and consent of PEKAREK ARCHITECTS, INC.